

TITLE:

PROJECT SHEET

Bee Pull-Along Toy - Profile

REVISION:

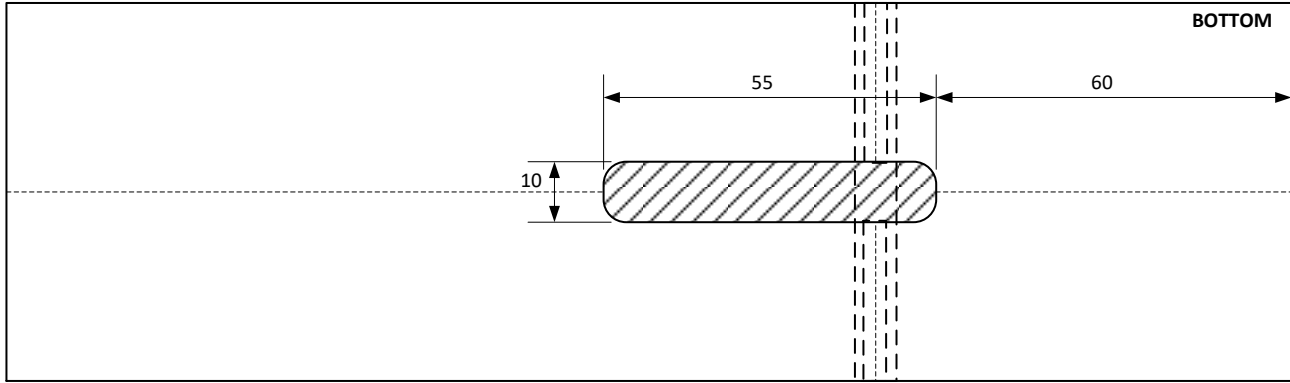
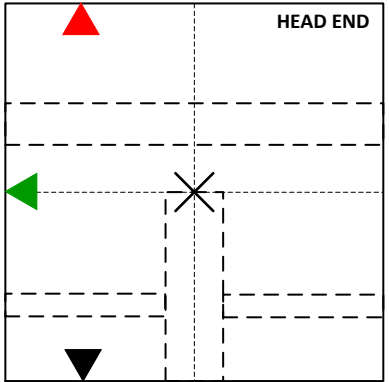
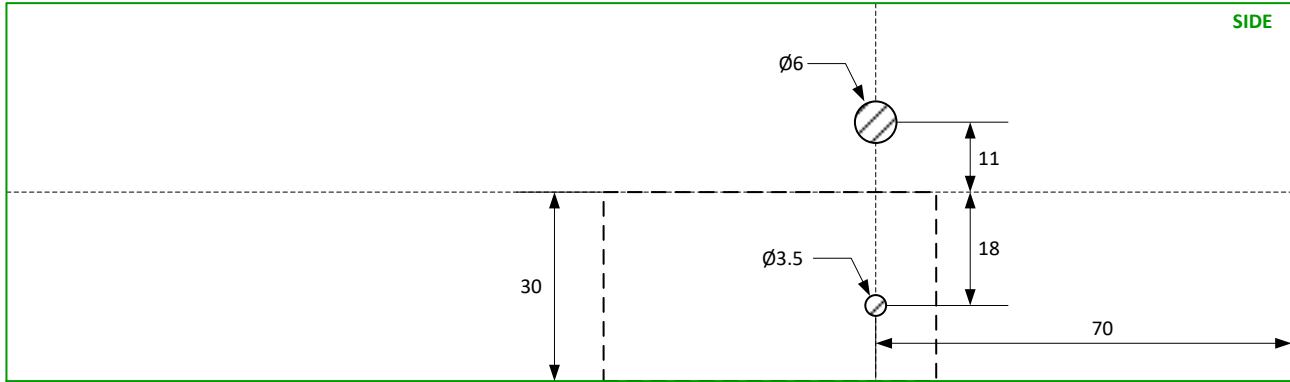
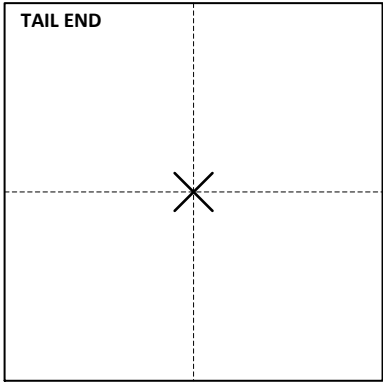
01

DRAWN:

Peter Clemett

PAGE: 01 OF: 9





60x60x220mm
blank, square and
true

NOT TO SCALE

TITLE:

PROJECT SHEET

Bee Pull-Along Toy – Body Blank Prep

REVISION:

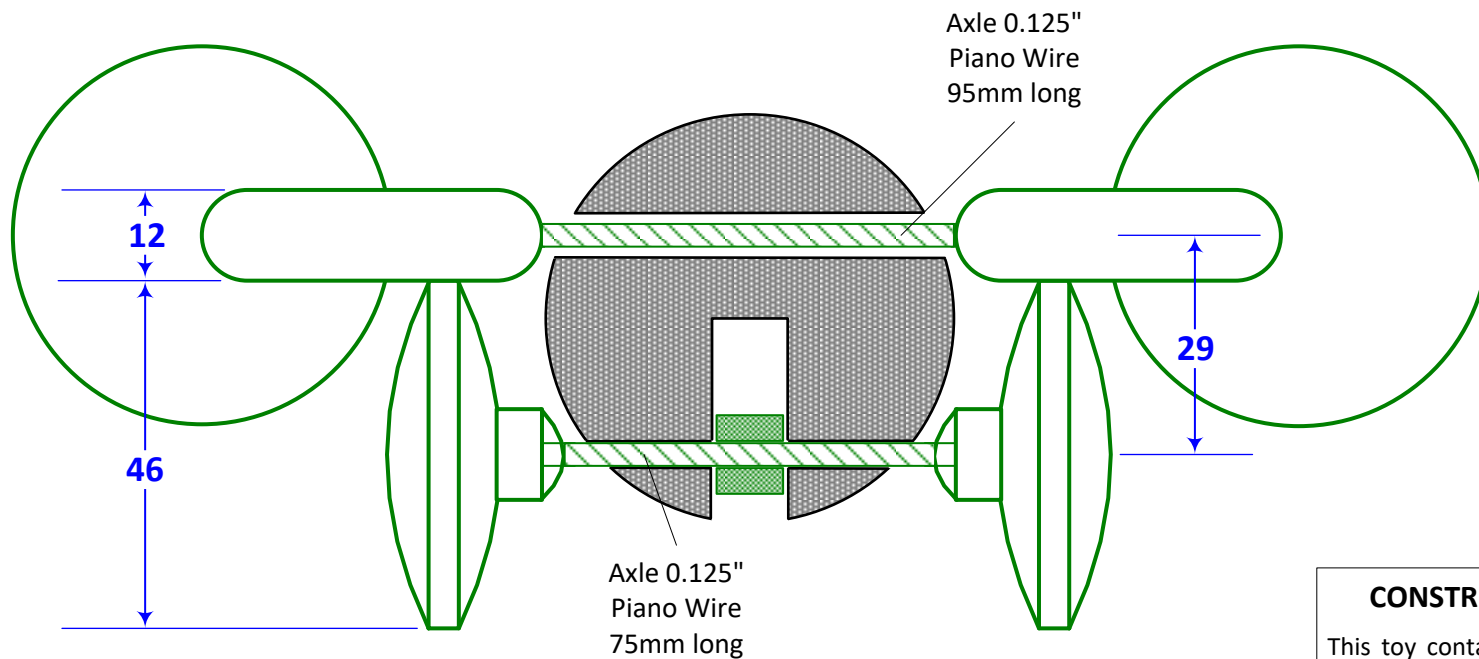
01

DRAWN:

Peter Clemett

PAGE: 02 OF: 9



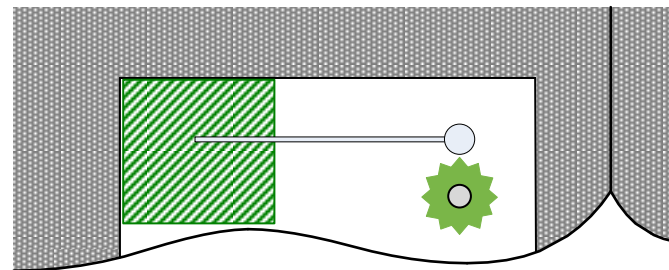


CONSTRUCTION NOTES

This toy contains many small parts which are a choking hazard if they become detached. Ensure that all glue joints are secure.

Use epoxy to attach wheels and wings to axles. Clean and roughen surface of axle wire with sandpaper before applying glue.

Buzzer gear is attached after assembly. Apply only a small drop of CA ("super glue") through the glue hole otherwise you risk binding up the wheel axle.



TITLE:

PROJECT SHEET

Bee Pull-Along Toy – Drive Arrangement

REVISION:

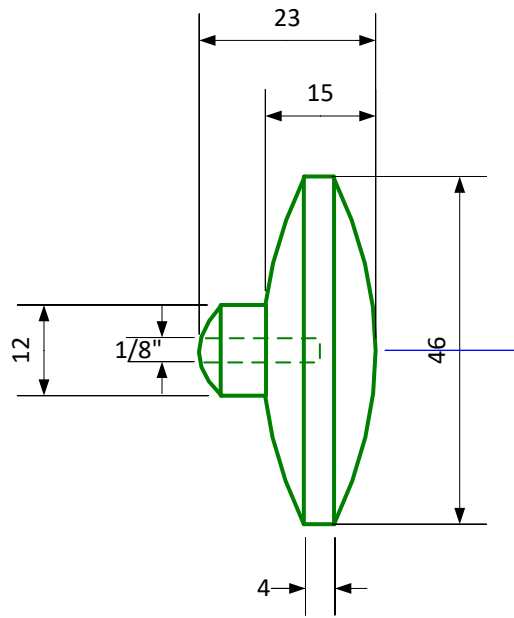
01

DRAWN:

Peter Clemett

PAGE: 03 OF: 9





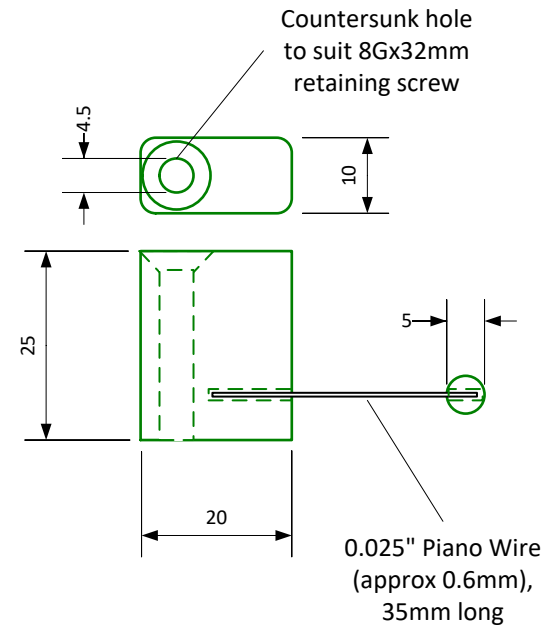
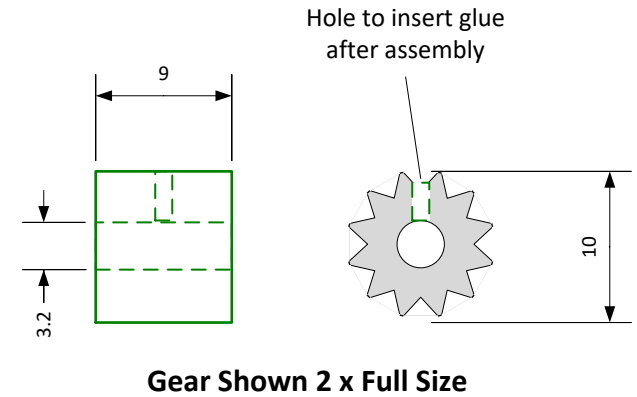
OPTION: Decorate
(texture, colour)

CONSTRUCTION NOTES:

It is not necessary for gear teeth to be precise or regular. They can readily be cut by hand using a triangular file or use a small burr in a rotary power tool (Dremel or similar).

Drill a small radial hole through the gear so that glue can be applied after assembly.

Clean and roughen surface of axle wire with sandpaper before assembly of wheels and gear. Apply only a small drop of CA ("super glue") through the glue hole otherwise you risk binding up the wheel axle.



TITLE:

PROJECT SHEET

Bee Pull-Along Toy – Wheels & Buzzer

REVISION:

01

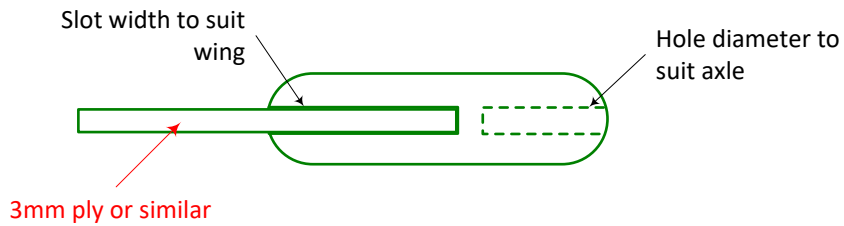
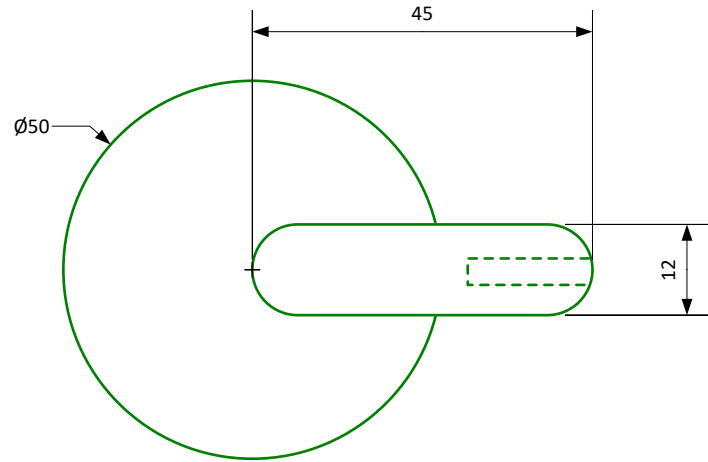
DRAWN:

Peter Clemett

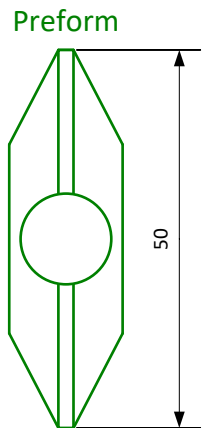
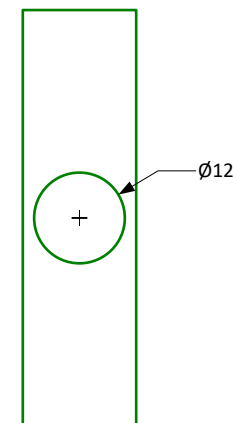
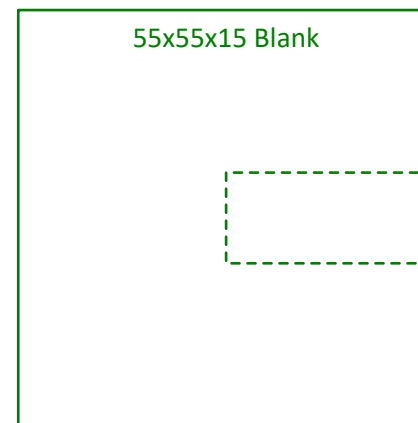
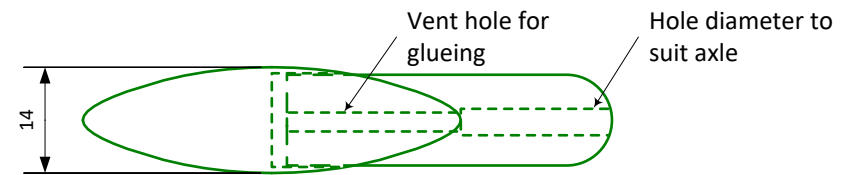
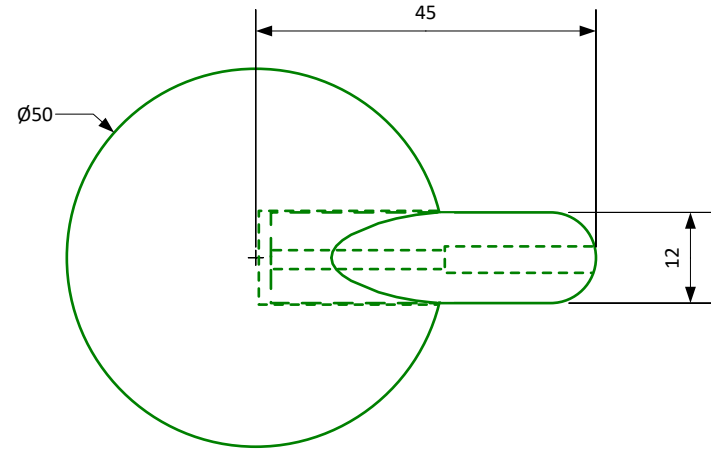
PAGE: **04** OF: **9**



STYLE A



STYLE B



TITLE:

PROJECT SHEET

Bee Pull-Along Toy – Wings

REVISION:

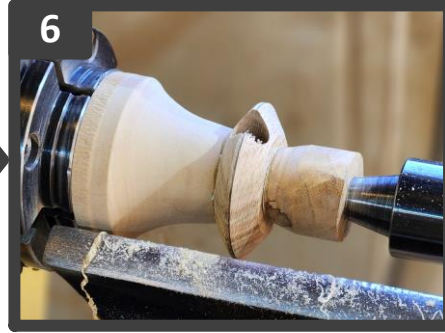
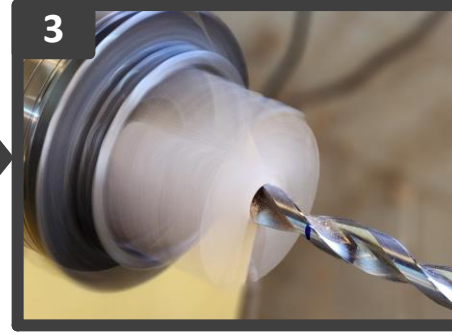
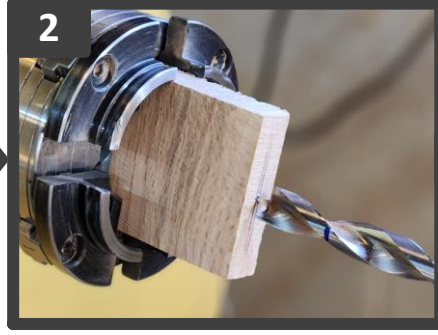
01

DRAWN:

Peter Clemett

PAGE: 05 OF: 9





- [1],[2] Center mark on side of blank. Mount blank in jaws as shown and align drill to centre.
- [3],[4] Drill 12mm diameter to 28mm depth.
- [5],[6] Remount blank between centres (friction drive). Turn to 50mm diameter, mark centre line, taper both sides to centre (1mm width).
- [7],[8],[9] Remount preform in jewellery chuck and round profile. Repeat on second side. Sand smooth to required finish level by hand.

TITLE:

PROJECT SHEET

Bee Pull-Along Toy – Wing Style-B Turning Sequence

REVISION:

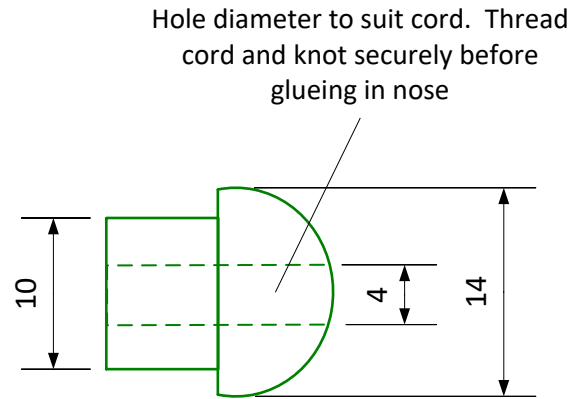
01

DRAWN:

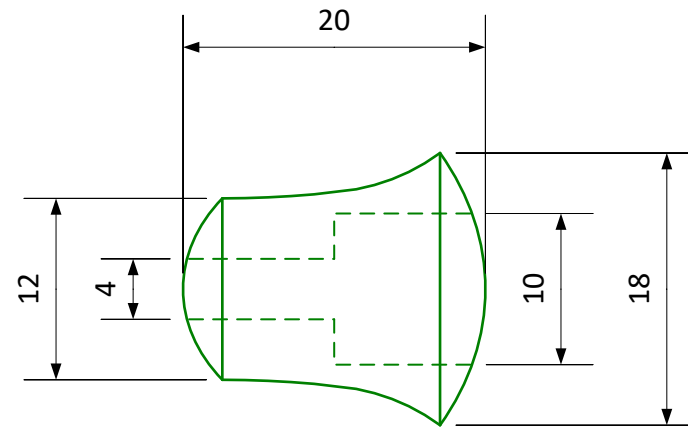
Peter Clemett

PAGE: 06 OF: 9





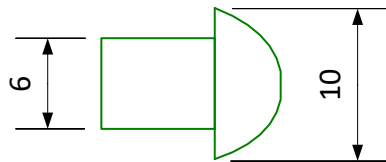
NOSE



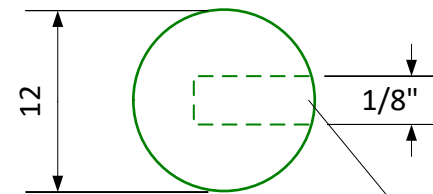
PULL

Parts Shown 2 x Full Size

All sizes and shapes are nominal – modify to suit your design



SKID



Antenna stalk is spring curtain wire inner, 65mm long. Glue with epoxy.

ANTENNA END x 2

TITLE:

PROJECT SHEET

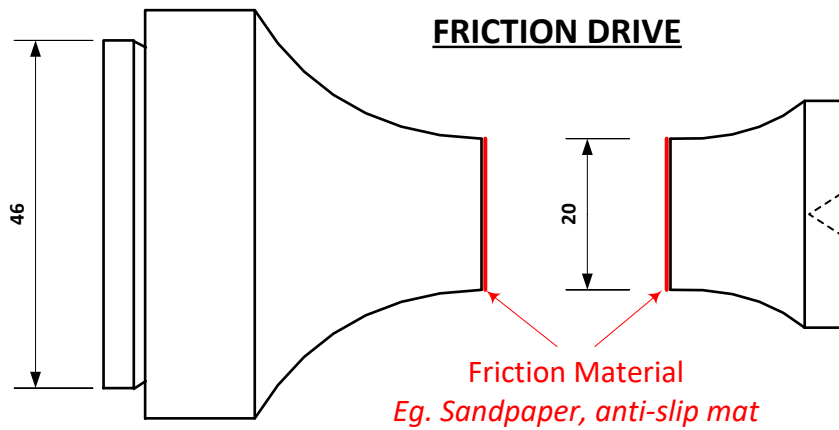
Bee Pull-Along Toy – Small Parts

01

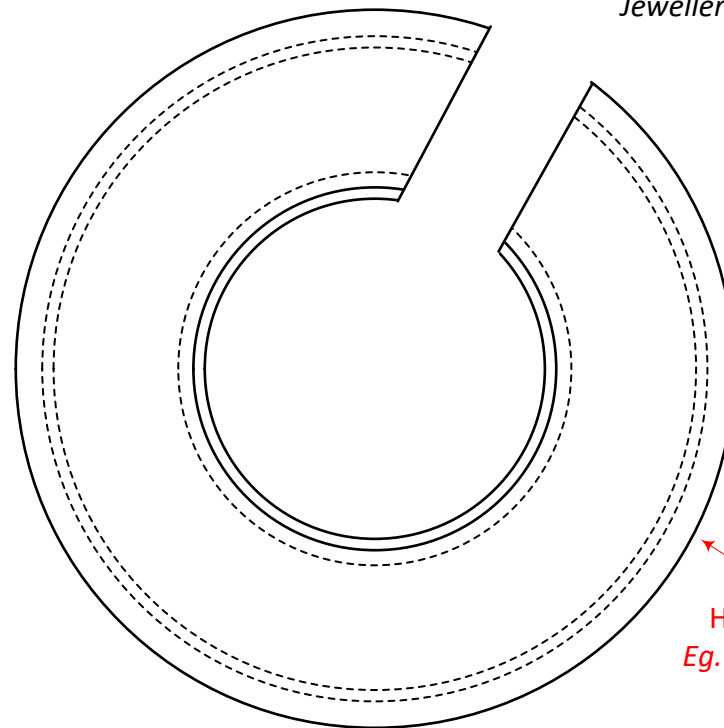
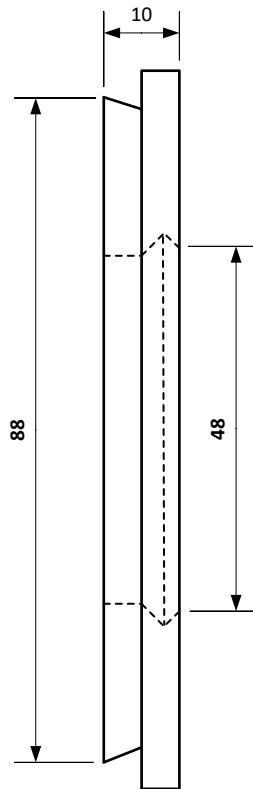
Peter Clemett

07

9



WING JIGS
To suit wing style-B



HDPE or similar
Eg. Chopping board

50mm PENDANT CHUCK

See SAWG Project Sheet:
Jewellery-Chuck-Central

TITLE:

PROJECT SHEET

Bee Pull-Along Toy – Jigs Part 1

REVISION:

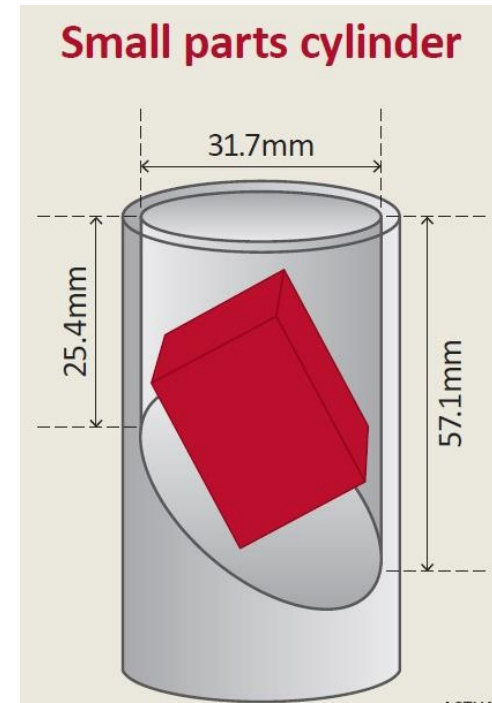
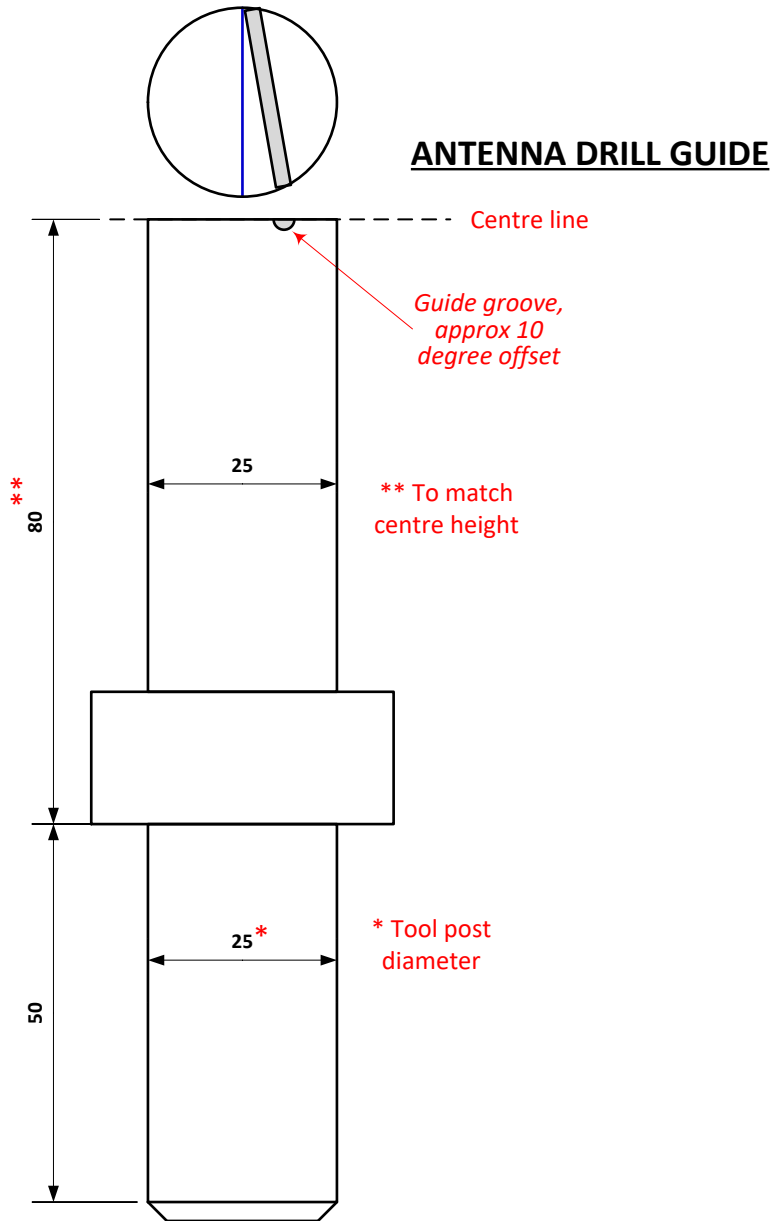
01

DRAWN:

Peter Clemett

PAGE: 08 OF: 9





https://comcom.govt.nz/_data/assets/pdf_file/0024/62583/Product-safety-standards-Childrens-toys-Fact-sheet-February-2021.pdf

TITLE:

PROJECT SHEET

Bee Pull-Along Toy – Jigs Part 2

REVISION:

01

DRAWN:

Peter Clemett

PAGE: 09 OF: 9

